

Greeley Central High School



Family & Consumer Sciences 9th Grade Course Offerings

Contact one of our Family & Consumer Sciences Instructors:

- Lauren Appelhans - lappelhans@greeleyschools.org
- Jamie Valdez - jvaldez14@greeleyschools.org
- Jessica Thomas - jthomas4@greeleyschools.org

Family & Consumer Sciences

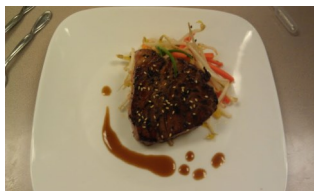
Freshmen Course Offerings

◆ **Food Science & Nutrition 1 & 2**

★ **HHE100 and HHE101**

★ Enroll in both semesters

★ Learn more about the food industry and your food choices. In first semester we follow food from farm to table and explore careers related to the food industry. In the second semester we look at how food functions in your body and how to make healthy food choices. There are hands on applications during cooking labs throughout the year.



◆ **Teen Choices**

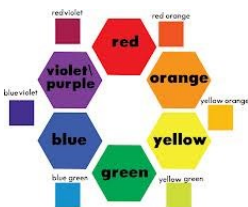
★ **HHE430**

★ Learn about how your brain develops and affects the world around you. In this class you will develop skills to making healthy decisions in all areas of your life. We focus on the wellness of the whole person, including social, emotional, intellectual, and physical.

◆ **Design Seminar**

★ **ADT270**

★ Do you enjoy sketching, moving objects around, determining why elements of a design work together? Design seminar is a class where the elements and principles of design are explored and applied to many design fields (including fashion, interior, visual arts, and culinary). The class is project based and a great way to express your creativity.



purple rose graphics 2012
www.purplerosegraphics.com

◆ **Fashion and Design 1 & 2**

★ **ADT650 and ADT651**

★ Enroll in both semesters

★ In this class, students are able to explore the world of fashion. We cover the elements of design, learn the basics of sewing, and use the design process to complete our own designs. Students walk away with three finished project and skills to last a lifetime.



FCCLA is a student organization which provides leadership & competition opportunities for students enrolled in Family & Consumer Science classes. GCHS FCCLA does not discriminate against persons on the basis of race, color, national origin, gender or handicap.

