

Good Evening McAuliffe Families,

We are excited to welcome you to the 2020-2021 school year. What an interesting journey we will be on together as we navigate many new things this year. Some of you will be in person while others have chosen to go online and together we will have a great year! Our number one priority will be to use all of our health and safety protocols to keep everyone healthy.

Safety Precautions: We've put a lot of safety precautions in place to keep our school healthy and safe. Each classroom has been outfitted with hand sanitizer, a sanitizing disinfectant solution and all desks have been physically distanced to the greatest extent possible. Within our hallways, we have clear indications on the ground to ensure that passing traffic flow is physically distanced. In addition, we've put hand sanitizer stations in our hallways and entrances. There has been extra time built into your child's day for hand washing, mask breaks and Vitamin D time. Lunch times have been extended to 25 minutes to allow students to wash their hands before and afterwards. We have listed many of the most important pieces of information, at this time, for you below.

Masks: Masks are required for ALL STUDENTS inside and outside our building. Students will have two or three mask breaks throughout the day in addition to their lunchtime, providing that physical distancing is observed. All staff members will also be wearing a mask all day.

Breakfast/Lunch: Due to COVID, we are unable to provide microwaves for our students to use. If you plan on sending your student with lunch, please ensure items do not need to be heated. Our cafeteria is closed and both eating periods will be within the classroom. All breakfast and lunches will be "grab and go." There will be three locations that your child will be able to grab their breakfast and proceed to their classroom. Each morning, teachers will take a lunch count so your student will need to tell their teacher in the morning if they need a school lunch that will be delivered to the classrooms. At this time, we are attempting to limit the number of visitors to our school. We will not have any parents or visitors allowed to eat lunch with students. We also ask that you limit the amount of deliveries for student lunches.

Visitors: Should you need to drop off forgotten supplies for your student, please come to our office. Once you ring our bell, one of our office staff will meet you at the door to gather those supplies and will get them delivered to your child. Unfortunately, due to safety precautions during COVID-19, we will be unable to have volunteers in our classrooms.

Arrivals: All students have been cohorted. This cohort will stay together for the entirety of the day. This year, due to COVID and construction, our playground will be closed. As a result, we ask that you do not bring students to school before 7:30am as our campus will not be open. As students arrive, they will have their temperature taken. Students with temperatures under 100.0 will be permitted on campus. Entry onto campus for grades 3, 5, 6, 7, 8 will be at the southeast gate. Entry for Kindergarten, 1, 2, and 4 will be on the southwest side of the building. Walkers to our school will find that the gate that once opened up onto 4th Street has been closed due to construction. Walkers will cross the street using the crosswalk and proceed west to 51st Avenue then south to the main sidewalk. Students will be using specific doors assigned to their homeroom/1st period class (see map below). With our playgrounds closed, students will go immediately to their classroom between 7:30am and 7:50am. Below is a map of the location for the entrance for each teacher.

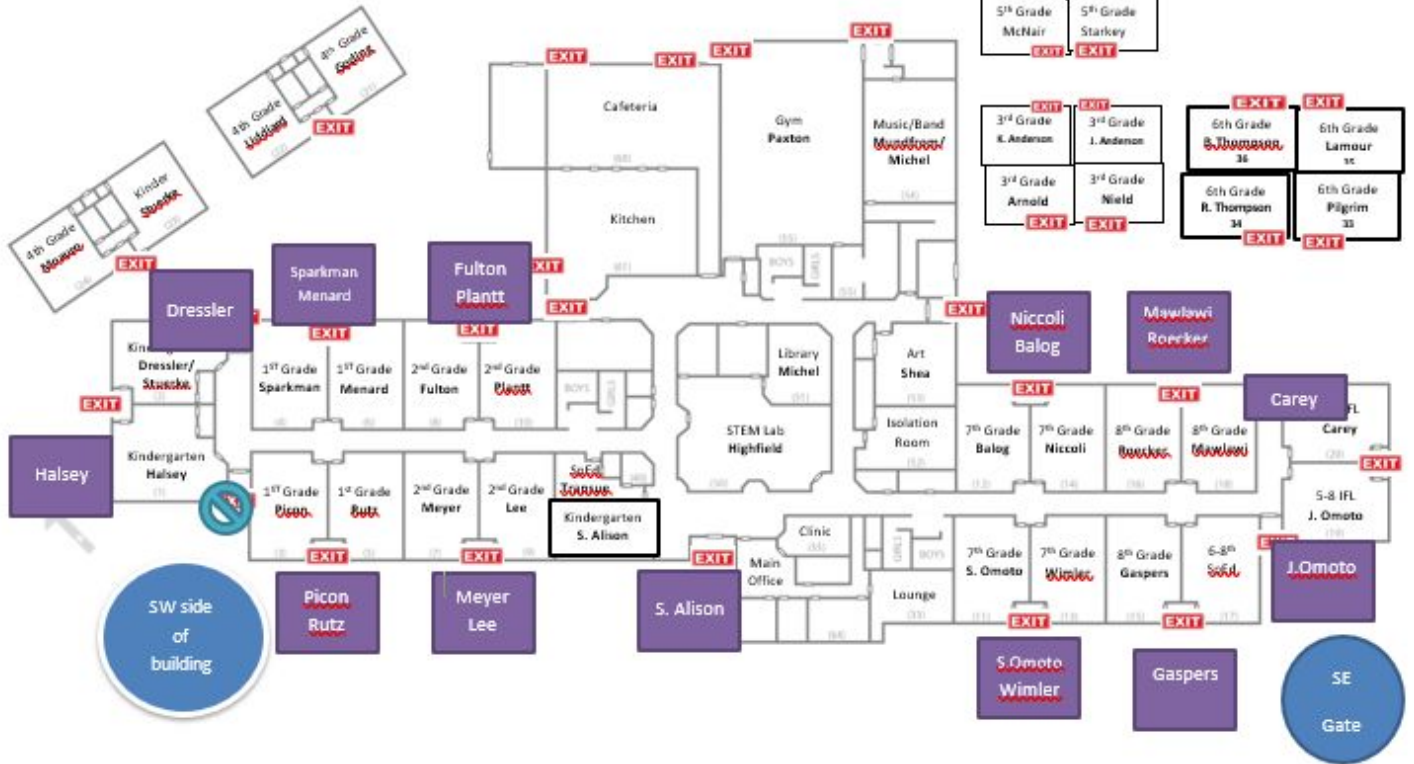


S. Christa McAuliffe S.T.E.M. Academy

600 51st Avenue Greeley, Colorado 80634

2020-2021 Entry Locations

Portable location to main building is not accurate.
All portable classrooms will use their own door to enter/exit



Dismissal: In order to keep our cohorts in place through the entire day, dismissal will look a little different this year. Our walkers, daycare, and students requiring busing will be dismissed at 3:05pm. Walkers will be asked to immediately leave campus. At 3:10pm, teachers will escort their class cohorts to a designated spot at the front of the school around our blue line. Students will remain in a line until their ride is available. All teachers will have their dismissal space assigned and a sign will be posted with their last name. In general, our elementary students will be in lines at the front southwest side of the building/lawn. Our middle level students will be on the southeast side of our blue line curve.

Back to School Events: Our back to school events have been cancelled for this year. Please watch for further information from your child's teacher.

Middle Level Sports: At this time, we are not accepting sports registration. We are working with our district, Weld County Health personnel, and CHSAA to hopefully offer sports starting in January 2021.

Chromebook: Your student will be assigned a Chromebook and charger this year, after the technology agreement has been signed. It will be your responsibility to charge the Chromebook at home each night and ensure it is returned each day fully charged. The charger will stay at home and the Chromebook will need to

come to school with your student each day. Families are responsible for any damages to the device or if it gets lost.

Staggered Start Date: As we start the school year, we plan to have a third of the student body in grades 1-8 return each of the first three days of school. This will be an opportunity to train all students in small groups on the procedures we will be using this fall to support student safety. We will use the last names of students to designate which day they will attend, and if a household has students with different last names, we ask that they use the last name of the oldest child so that each family/household is on the same schedule.

Here is the schedule for August 17-20:

- Monday, August 17- Students with last names A-G
- Tuesday, August 18- Students with last names H-O
- Wednesday, August 19- Students with last names P-Z
- Wednesday, August 19 - All Kindergarten students begin
- Thursday, August 20 - ALL students will attend school

On the first day they report, students should bring all of their school supplies. This year it is going to be extremely important for every student to have a backpack everyday, as they will be transporting a chromebook to and from school. If your student is in need of a backpack or school supplies please contact us.

We appreciate all of your support as we begin this year. Should you have further questions please don't hesitate to reach out to your student's teacher or the main office.

Thank you very much!

Jeff Petersen
Principal
S. Christa McAuliffe STEM Academy